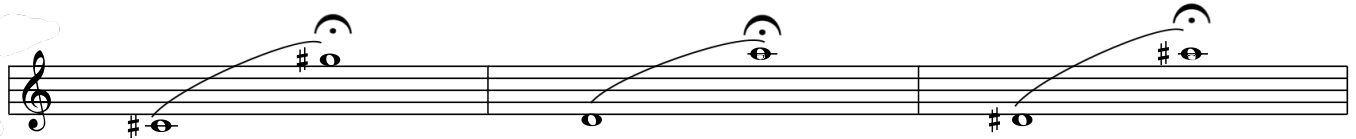
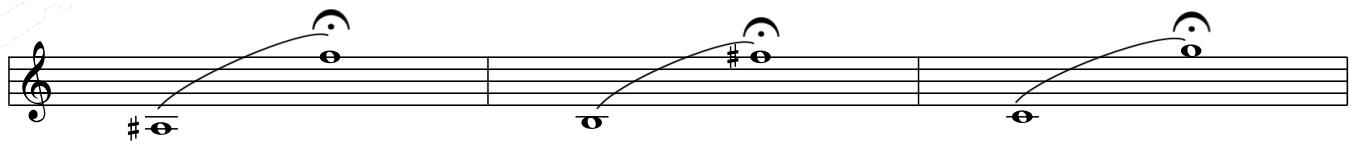
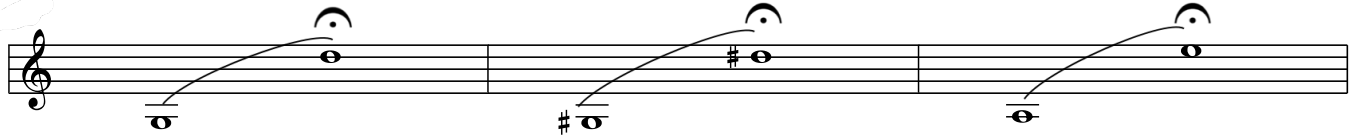
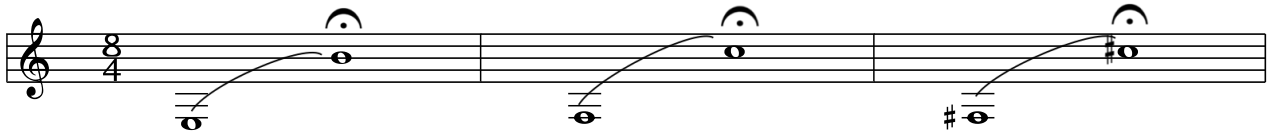


# Clarinet Register Warm-Up (1)

♩ = 60

Hold each note at least 4 beats. Listen for consistency of tone, and use enough air to get a vibrant sound. Imagine filling the entire room with your sound.

Bb Clarinet



# Clarinet Register Warm-Up Altissimo Legato

♩ = 60

Bb Clarinet

Musical notation for Bb Clarinet, measures 1-3. The staff is in treble clef with a 12/4 time signature. The notes are: Measure 1: G4 (with a flat), A4 (with a flat), B4 (with a sharp and a flat). Measure 2: C5 (with a sharp and a flat), D5 (with a flat), E5 (with a flat). Measure 3: F5 (with a flat), G5 (with a sharp and a flat), A5 (with a sharp and a flat). Slurs connect the notes in each measure, and a larger slur covers the entire phrase.

Bb Cl.

Musical notation for Bb Clarinet, measures 4-6. The staff is in treble clef with a 4/4 time signature. The notes are: Measure 4: G4 (with a flat), A4 (with a flat), B4 (with a sharp and a flat). Measure 5: C5 (with a sharp and a flat), D5 (with a flat), E5 (with a flat). Measure 6: F5 (with a flat), G5 (with a sharp and a flat), A5 (with a sharp and a flat). Slurs connect the notes in each measure, and a larger slur covers the entire phrase.

# Clarinet Register Warm Up - Removing Register Key

♩ = 60

the notes in parenthesis are the pitches that should be heard when you release the register key.

Bb Clarinet

1 2 3 4

5

Bb Cl.

5 6 7 8

10

Bb Cl.

9 10 11 12

# Clarinet Register Warm-Up (Tap)

♩ = 60

the notes in parenthesis are the "notes" that come out when you tap the register key.

Bb Clarinet

5

9

13

17